

6540270

MONTERREY

MONTERREY® 8-INCH WIDESPREAD
GOOSENECK FAUCET WITH WRIST
BLADE HANDLES 1.5 GPM/5.7 LPM WITH
FLEXIBLE UNDERBODY

*American
Standard*

STANDARD SPECIFICATION:

- Field-convertible rigid/swivel gooseneck spout with 5" (127 mm) reach
- Cast brass valve bodies with flexible connections. 6" – 12" (152 – 305 mm) C-C
- 1/2" (13 mm) male threaded inlet shanks with brass coupling nuts
- Washerless ceramic disc valves assure drip-free performance
- Vandal-resistant wrist blade handles with red and blue indicators
- 1.5 gpm/5.7 Lpm pressure-compensating aerator



AVAILABLE FINISHES:

6540270.002



Polished Chrome

CERTIFICATIONS:



- ADA
- WaterSense
- Low Lead Certified
- Complies with lead plumbing laws

NOTE: Install this product according to the installation guide. ADA, CSA compliant when installed to the specific requirements of these regulations.

We reserve the right to make revisions without notice to product specifications. 08-11-2025

US

Tel: 1.855.815.0004

For the most current Specification Sheet,
go to <https://www.americanstandard-us.com>.

Canada

Tel: 855.836.9615

For the most current Specification Sheet,
go to <https://www.americanstandard.ca>.

PART OF **LIXIL**

6540270

MONTERREY

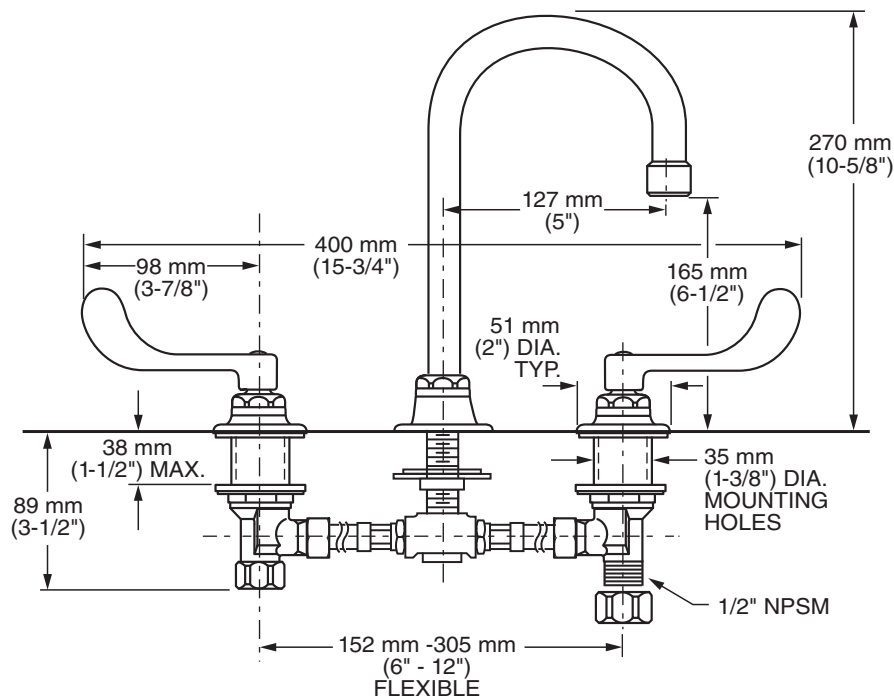
*American
Standard*

MONTERREY® 8-INCH WIDESPREAD GOOSENECK FAUCET WITH WRIST BLADE HANDLES 1.5 GPM/5.7 LPM WITH FLEXIBLE UNDERBODY

TECHNICAL DATA:

Product Height	10.63 in (270 mm)
Product Length	6.2 in (157.48 mm)
Product Width	15.75 in (400.05 mm)
Fitting Spout Height	10.63 in (270 mm)
GPM (Min)-GPM (Max)	1.5 GPM
Fitting No of Holes Required	3
Product Weight	4.685 lb

PRODUCT COMPONENTS:



NOTE: Install this product according to the installation guide. ADA, CSA compliant when installed to the specific requirements of these regulations.

We reserve the right to make revisions without notice to product specifications. 08-11-2025

US

Tel: 1.855.815.0004

For the most current Specification Sheet,
go to <https://www.americanstandard-us.com>.

Canada

Tel: 855.836.9615

For the most current Specification Sheet,
go to <https://www.americanstandard.ca>.

PART OF **LIXIL**